



AUTOSIM-200

The shortest way to automation!



The new autoSIM-200 is software for training in automation technologies that is easy to install and handle allowing the user to try his/ her programs on a virtual system before applying the circuit to build.

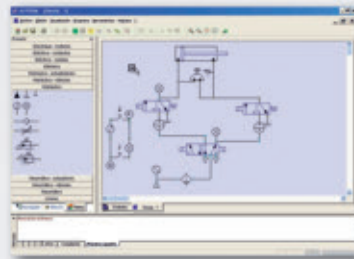
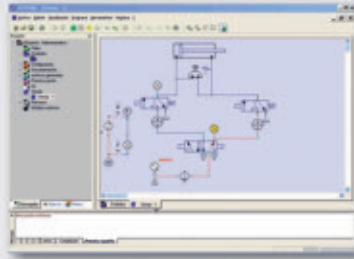
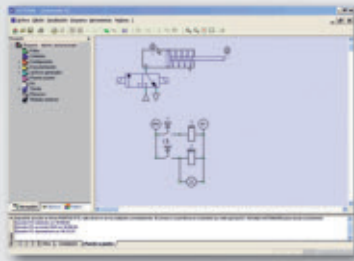
It represents the ideal complement using training equipment which enables a more efficient use of the laboratory. It can also be used independently of the training systems.

• SAI2252	autoSIM-200, 1 educational licence
• SAI2253	autoSIM-200, 8 educational licences
• SAI2254	autoSIM-200, 16 educational licences
• SAI2255	autoSIM-200, 1 industrial licence

autoSIM-200 includes:

- Design of automation applications (pneumatics, electro-pneumatics, hydraulics, etc.).
- Design of system supervision applications.
- Simulation of operative parts in 3D, generation of demonstration animations etc..
- Importation of 3D drawings (3D Studio, AUTOCAD, SOLIDWORKS, SOLID-CONCEPTER, etc.)
- A fully configurable environment.
- Generation of self-compressing executable files with applications.

The unique development environment allows programming, simulating, preparing and supervising automated processes. The IRIS3D application allows simulating applications and shows how a machine or system operates. The autoSIM-200 advanced version (under development) also includes the possibility of generating programs for Programmable Logic Controllers (there is a wide range of PLCs included in the program).



autoSIM-200 is supplied with a quick reference guide in addition to the following manuals in electronic formats:

- language reference manual
- environment reference manual
- "SIMULA" module manual
- post-processors reference manual

