

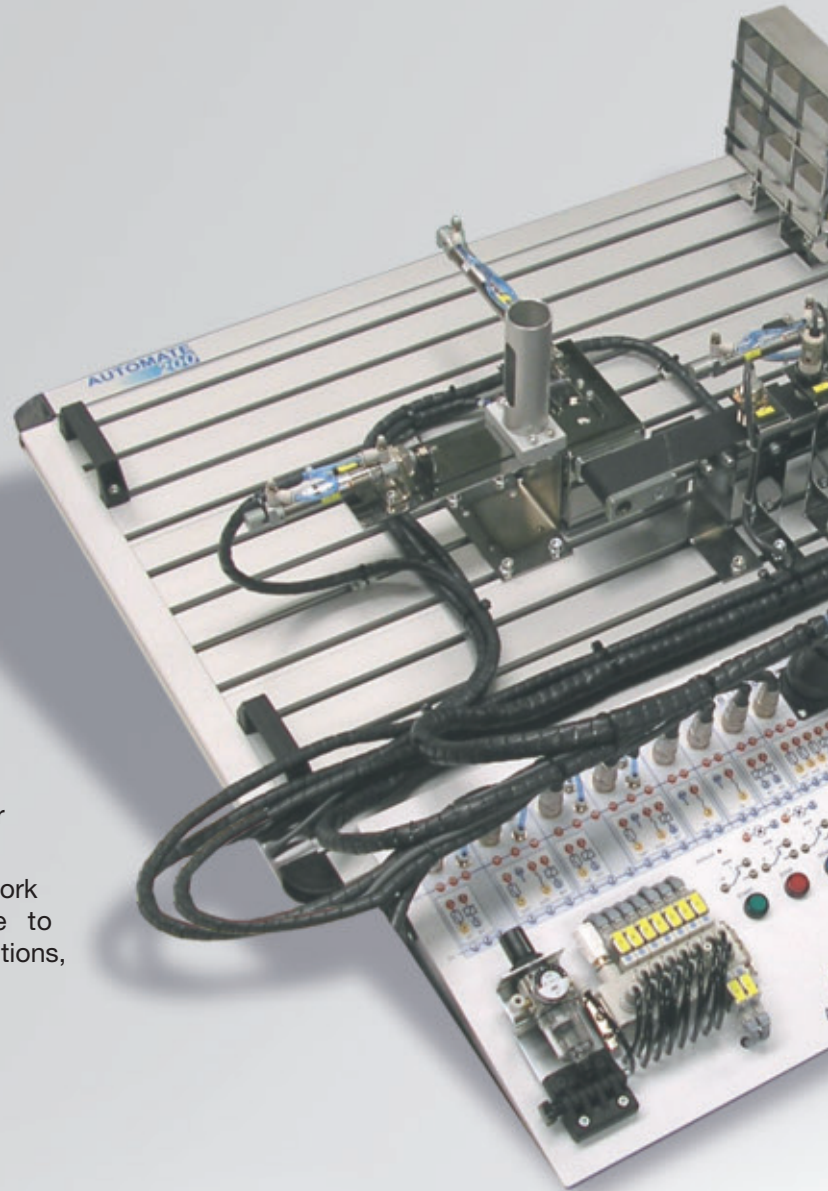


AUTOMATE-200

Enter the world of automation

AUTOMATE-200 is SMC International Training's response to the increasing demand for the introduction of a technological culture in training centers. Taking a recycling plant for solid urban waste as a reference, a fully modular design system is presented. A series of functional blocks, which allow multiple combinations, enable an endless range of activities with various levels of difficulty. The integration of the technologies present in automated processes allows the familiarization of the user with this fascinating world.

The system is designed to promote teamwork through various activities that contribute to developing this capacity, such as competitions, joint layout design, etc.





• SAI2998	AUTOMATE-200 with Allen-Bradley PLC
• SAI2997	AUTOMATE-200 with Siemens PLC
• SAI2996	AUTOMATE-200 with Omron PLC
• SAI2995	AUTOMATE-200 with Mitsubishi PLC

OTC AUTOMATE 200



A world of possibilities!

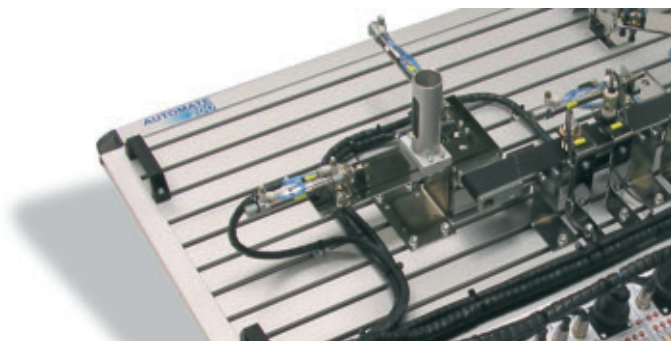
With this system, the student will use an integrating and motivating context to become familiar with technologies such as pneumatics, electro-pneumatics, sensors, motors or PLCs in an enjoyable and intuitive way, using completely industrial components and developing skills in analysis, mounting, diagnosis and breakdown repair, programming etc.

The raw material used in the process includes parts with different colors (light/ dark), materials (plastic/ metal) and shapes (with or without opening). During the last phase of the process, the parts are stored in containers.

AUTOMATE-200 includes ten functional blocks that allow the user to design an endless amount of configurations emulating different processes and the possibility of expanding them in the future.

In addition, it has two control panels, manual and via PLC, prepared for rapid connection with functional modules.

An aluminum base is used as a support for the different functional blocks.



Control modules

Manual control panel.

It includes:

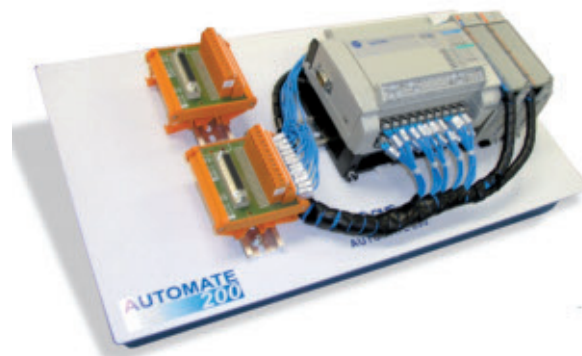
- Air treatment unit
- Keypad
- Air connection for all the functional blocks
- Main switch
- Two distributor blocks with solenoid valves
- Rapid connection sockets
- 24V power supply



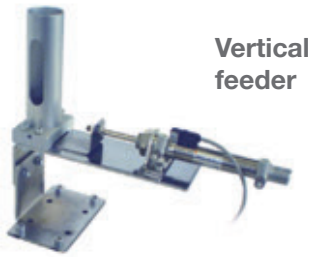
Control panel via PLC

This module includes the PLC as well as rapid connection input / output modules.

We offer an ample variety of PLC brands. Please consult availability.



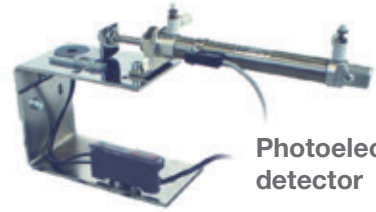
Functional blocks



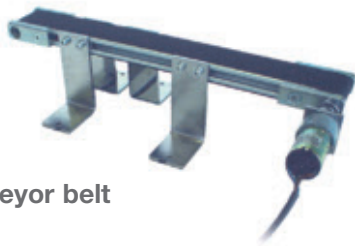
Vertical feeder



Part detector



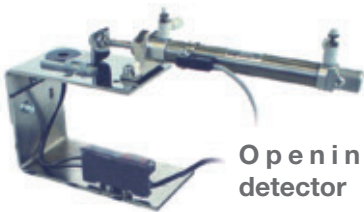
Photoelectric detector



Conveyor belt



Belt pusher



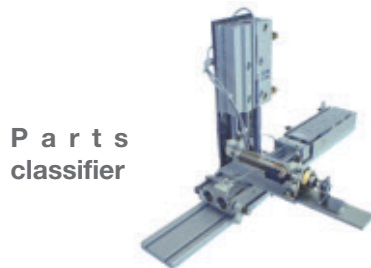
Opening detector



Inductive detector



Manipulating device with pad

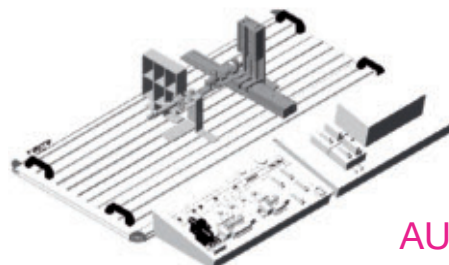
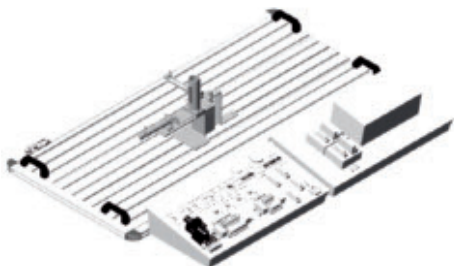
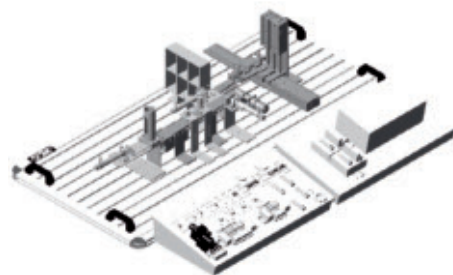
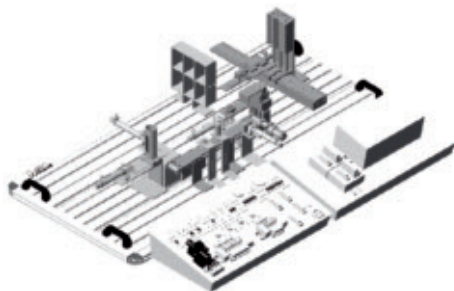


Parts classifier



Warehouse

Multitude of possible configurations





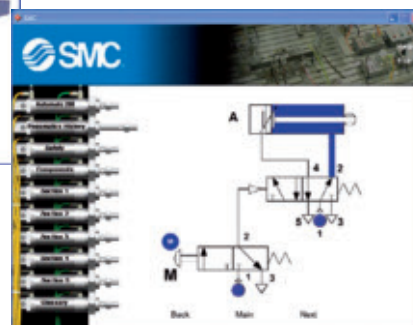
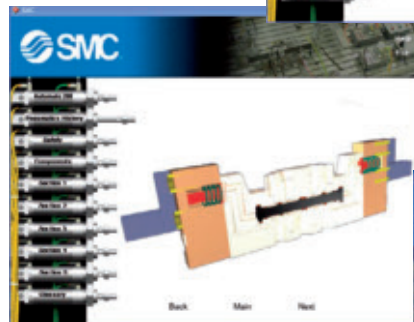
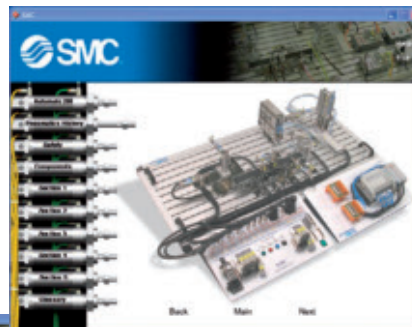
Documentation

AUTOMATE-200 is supplied with a full set of documentation which includes:

- User manual comprised of the system handling instructions as well as the technical specifications of each component and its corresponding pneumatic, electrical and mechanical diagrams.
- Practice manual with a complete collection of practical exercises directed at the development of the indicated professional skills.

MULTIMEDIA CD

AUTOMATE-200 includes a complete multimedia CD with a series of didactic units with animations, simulations etc. for adequate operation of the system.





AUTOMATE-200

- **Panel dimensions:** 582 x 1200 mm
- **Functional blocks:**

VERTICAL FEEDER

- Double acting cylinder with speed controllers and end position switch. Controlled by solenoid valve.
- Auto switch, Reed type.

PART DETECTOR

- Double acting cylinder with speed controllers and end position switch. Controlled by solenoid valve.
- Auto switch, Reed type.
- Photocell with fiber optic.

CONVEYOR BELT

- Belt fitted with two rollers pulled by 24Vdc motor.

PHOTOELECTRIC DETECTOR

- Photoelectric sensor.

INDUCTIVE DETECTOR

- Inductive sensor.

OPENING DETECTOR

- Double acting cylinder with speed controllers and end position switch. Controlled by solenoid valve.
- Auto switch, Reed type.
- Photocell with fiber optic.

BELT PUSHER

- Double acting cylinder with speed controllers and end position switch. Controlled by solenoid valve.
- Auto switch, Reed type .

ROTARY MANIPULATING DEVICE

- Double acting cylinder with speed controllers and initial and end position switches. Controlled by solenoid valve.
- Rotary actuator: paddle type with speed controllers. Controlled by solenoid valve.
- Fixing arm: pad with vacuum ejector controlled by solenoid valve.
- Vacuum pressure switch.
- Auto switches, Reed type.

PART CLASSIFIER

- Double acting cylinder with guides with speed controllers and initial and end position switches. Controlled by solenoid valve.
- Two double acting cylinders and parallel rods with speed controllers and end position switches. Controlled by solenoid valve.
- Double acting cylinder with speed controllers and end position switch. Controlled by solenoid valve.
- Auto switches, Reed type.

WAREHOUSE

MANUAL CONTROL PANEL:

- **Dimensions:** 532 x 292 x 132 mm
- Air treatment unit
- Control keypad
- Air connection for all the functional blocks
- Main switch
- Two distributor blocks with solenoid valves
- Rapid connection sockets
- 24V power supply

CONTROL PANEL VIA PLC

- **Dimensions:** 532 x 292 x 190 mm
- PLC: according to the user's choice.
- 2 rapid connection input / output modules.